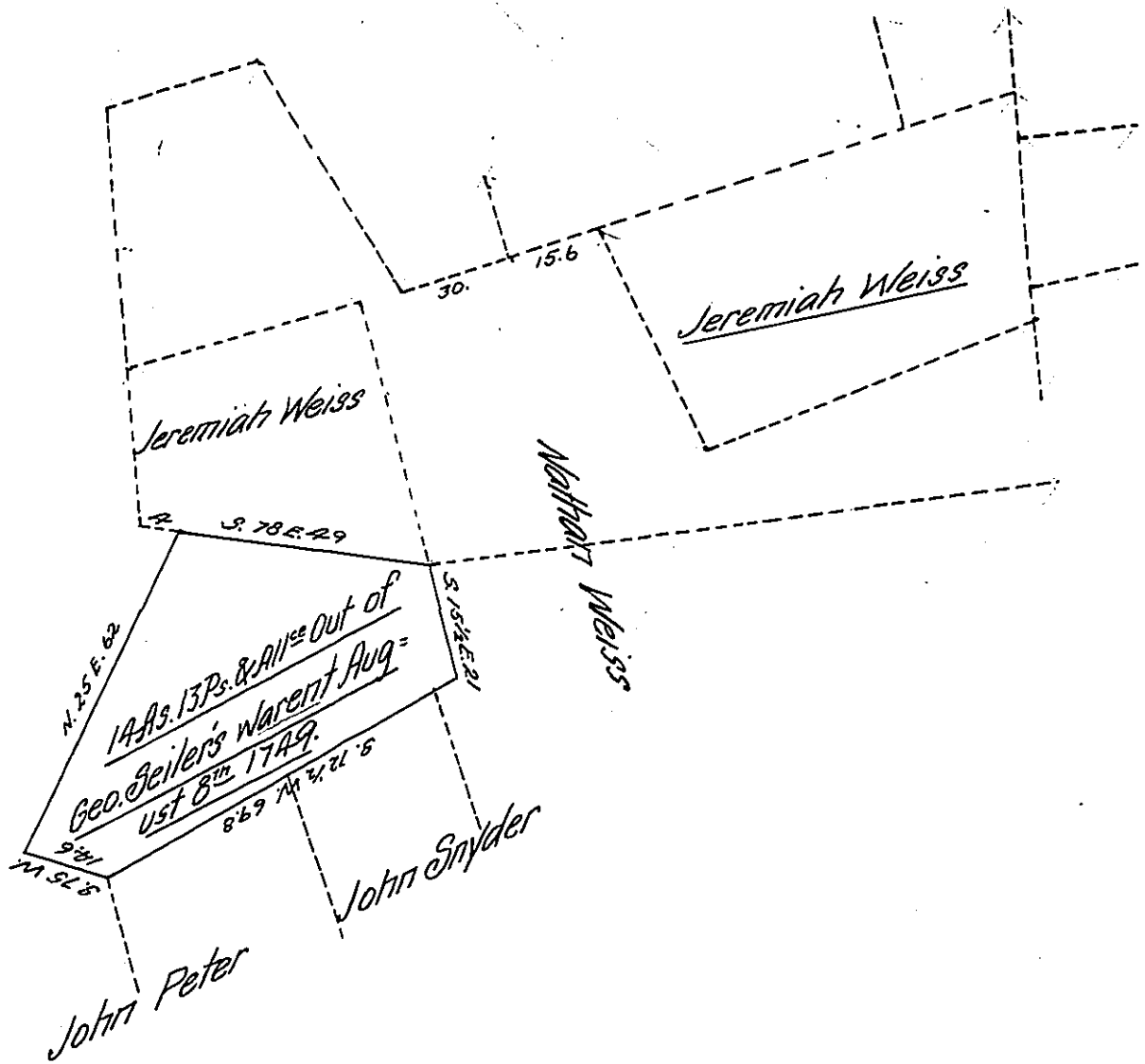


Henry Wetersthrine
now
Jesse Kissler



By Virtue of Fourteen Acres and Thirteen Perches of Land, with the Usual Allowance of Six Per Cent For Roads &c; Being Part of Warrant Granted and Dated August 8th 1749 unto George Seiler, And Now the Property of Jeremiah Weiss, Situated In the Township of Heidelberg, County of Lehigh and State of Pennsylvania, Surveyed under one and one half Degrees Variations From Lehigh County Established Meridian. Lines on Nov. 28th 1864.

Peredol^{le} Fogel C.S.

Hon. James P. Barr, Surveyor General }

IN TESTIMONY that the above is a copy of the original remaining on file in the Department of Internal Affairs of Pennsylvania, made conformably to an Act of Assembly approved the 16th day of February 1833, I have hereunto set my hand and caused the Seal of said Department to be affixed at Harrisburg, this thirtieth day of January 1907

Geo. R. Brown
Secretary of Internal Affairs.